



WESTLEY

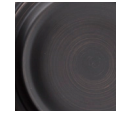
lever

SAFE LOCK

BOX PACK

MODEL	FUNCTION	FINISH				CASE
		11P	15	26	26D	QTY
SL1000WTL	Hall/Closet	\$45	\$45	\$45	\$45	20
SL3000WTL	Bed/Bath	\$50	\$50	\$50	\$50	20
SL5000WTL	Entry	\$63	\$63	\$63	\$63	20
SL7000WTL	Half Dummy	\$24	\$24	\$24	\$24	20

Available Finishes



11P
Venetian Bronze



15
Satin Nickel



26
Bright Chrome



26D
Satin Chrome

VISUAL PACK

MODEL	FUNCTION	FINISH		CASE
		15	26D	QTY
SL1000WTL	Hall/Closet	\$47	\$47	6
SL3000WTL	Bed/Bath	\$52	\$52	6
SL5000WTL	Entry	\$65	\$65	6
SL7000WTL	Half Dummy	\$25	\$25	4

SPECIFICATIONS

ANSI/BHMA Grade 3 certified

Door prep Cross Bore 2-1/8". Edge Bore 1"

Backset Adjustable to 2-3/8" or 2-3/4"

Door Thickness 1-3/8" - 1-3/4" standard doors

Cylinder Pin and Tumbler - 5 pin Weiser keyway (VP)
5-Pin Kwikset keyway (BP)

Latch 1" x 2-1/4" square corner or drive in

Strikes 2-1/4" full lip

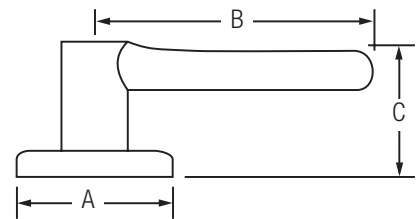
Bolt 1/2" throw

Door Handling Non-handed

ADA 1000 and 7000 functions satisfy section 4.13.9 ADA requirements.

UL Rated up to and including 3 hour UL fire rating for all UL functions. UL Ref. # R7860

Warranty Lifetime Mechanical & 5 Year-Limited Finish



Design	A	B	C
Westley	2-9/16"	4-3/32"	2-5/16"

SAFE LOCK

weiserlock.com